

OFFICE/MEDICAL  
**FOR LEASE**

Point 100 in the Heart of Maitland  
100 E. SYBELIA AVE. MAITLAND, FL 32751



**Newly  
Renovated!**



**FROM ±3,400 TO  
±815 SF SPACES  
AVAILABLE**

### Newly Renovated/Office Medical in a Great Maitland Location

Point 100 is situated near the new Downtown District, Maitland City Center and Maitland Concourse North just one block from U.S. 17/92, less than 2 miles from I-4 and surrounded by retail, banking and lunch options. Featuring recently updated common areas, lobby, restrooms, stairwells and landscaping.

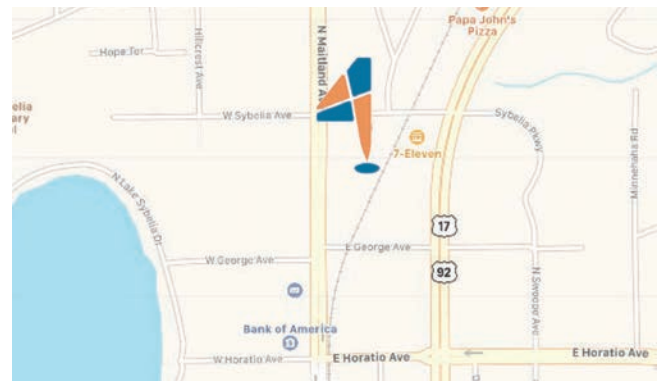
Point 100 is ideal space for small businesses or companies seeking to expand in one of Maitland's premier office buildings.

### Property Highlights

- Newly renovated common area, lobby, restrooms, stairwells, and landscaping
- New HVAC systems installed throughout the entire building
- Newly resurfaced parking lot
- First floor second generation medical space available 4/1/2020
- 1 Block from U.S. 17/92 & less than 2 miles from I-4
- Walking distance to new Maitland SunRail Station
- Nearby retail, banking, and many lunch options

### Property Details

<b>Lease Price:</b>	Call for Details - Full Service
<b>Building Size:</b>	±44,902 SF
<b>Max Space Available:</b>	±3,400 SF
<b>Min Space Available:</b>	±815 SF
<b>Parking:</b>	4.37/1,000
<b>Signage:</b>	Monument



PRESENTED BY

**Jordan Cacho**  
JORDAN@4ACRE.COM  
407.721.0602

**Colin Chou**  
COLIN@4ACRE.COM  
850.218.1902

**Samuel Gaslin**  
SAM@4ACRE.COM  
904.505.5282

**CALL  
FOR MORE  
INFORMATION**

PROPERTY  
PHOTOS

# Point 100 in the Heart of Maitland

100 E. SYBELIA AVE. MAITLAND, FL 32751



Short walk (0.3 Miles)  
from the the Maitland  
SunRail Station.

Point 100

PRESENTED BY

Jordan Cacho

JORDAN@4ACRE.COM  
407.721.0602

Colin Chou

COLIN@4ACRE.COM  
850.218.1902

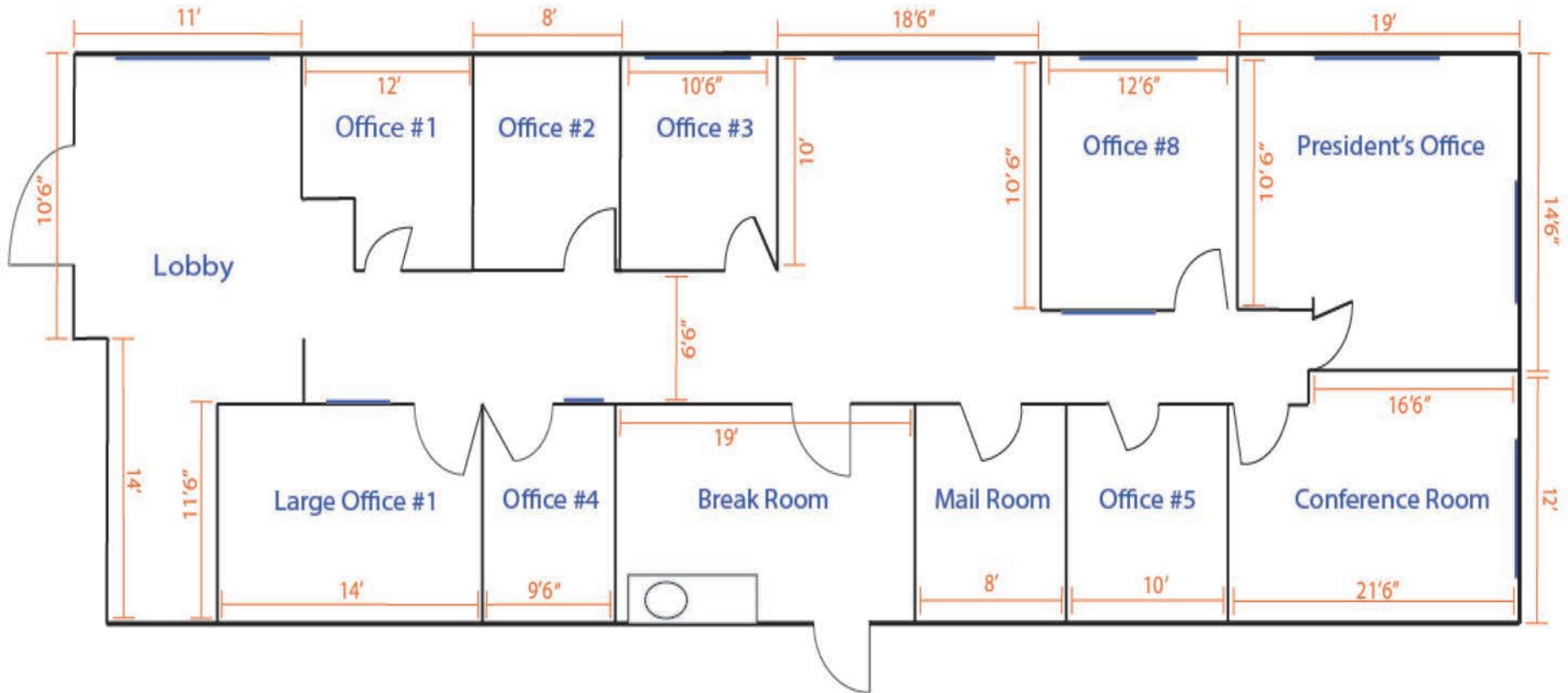
Samuel Gaslin

SAM@4ACRE.COM  
904.505.5282

CALL  
FOR MORE  
INFORMATION

## Suite 120 - ±3,400 SF

(All Measurements are Approximate)



PRESENTED BY

Jordan Cacho

JORDAN@4ACRE.COM

407.721.0602

Colin Chou

COLIN@4ACRE.COM

850.218.1902

Samuel Gaslin

SAM@4ACRE.COM

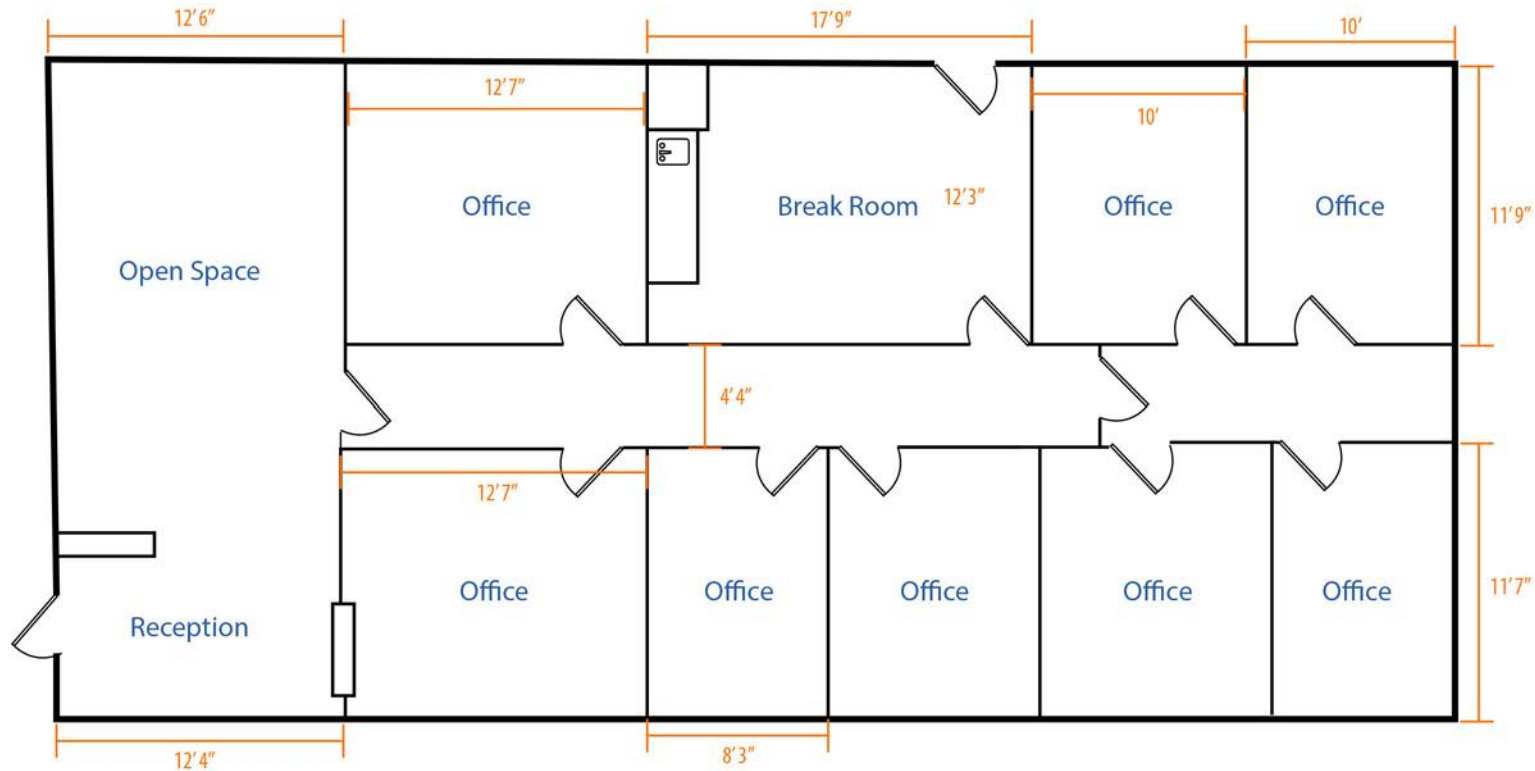
904.505.5282

CALL  
FOR MORE  
INFORMATION

## Suite 150 - ±2,322 SF

### Second Generation Medical Space

(All Measurements are Approximate)



PRESENTED BY

Jordan Cacho  
JORDAN@4ACRE.COM  
407.721.0602

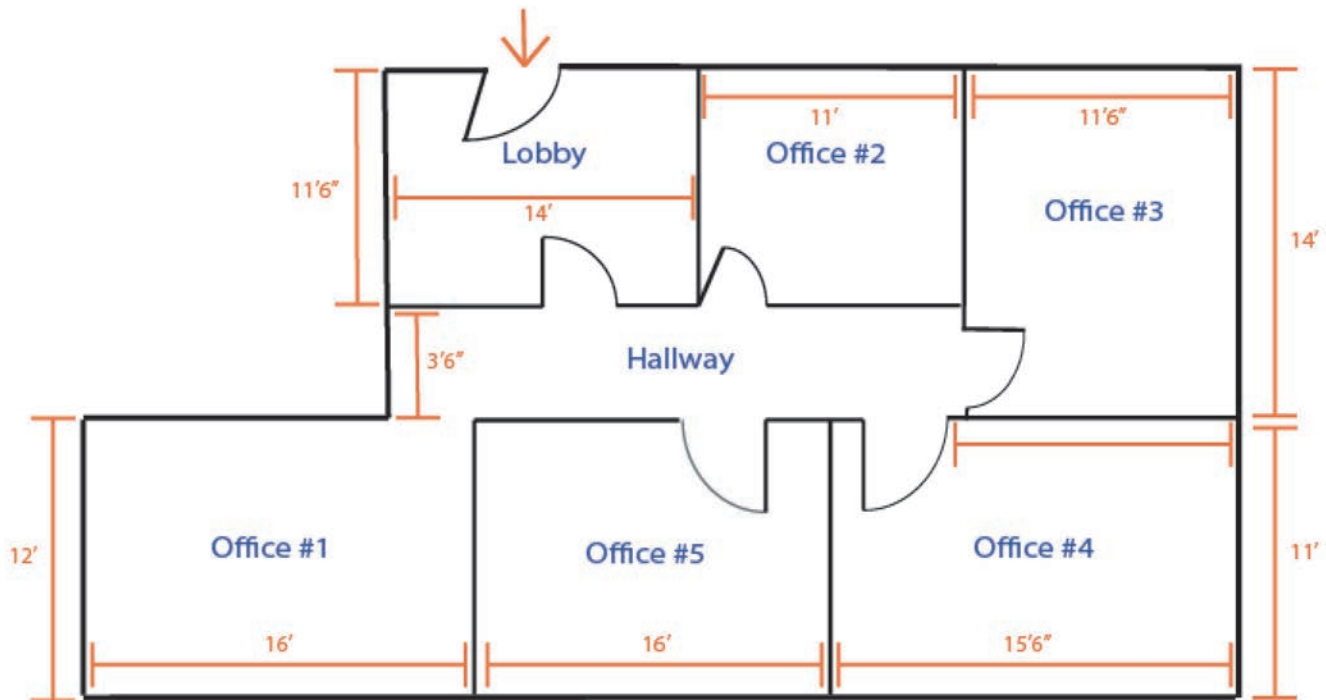
Colin Chou  
COLIN@4ACRE.COM  
850.218.1902

Samuel Gaslin  
SAM@4ACRE.COM  
904.505.5282

CALL  
FOR MORE  
INFORMATION

## Suite 260 - ±1,832 SF

(All Measurements are Approximate)



PRESENTED BY

Jordan Cacho

JORDAN@4ACRE.COM  
407.721.0602

Colin Chou

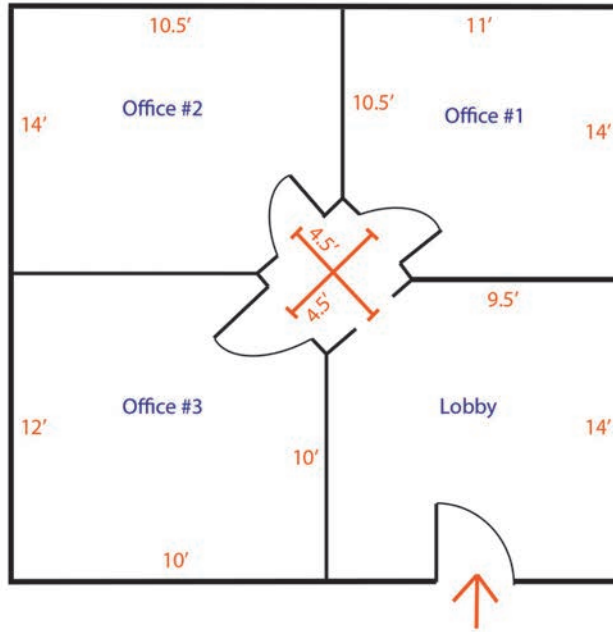
COLIN@4ACRE.COM  
850.218.1902

Samuel Gaslin

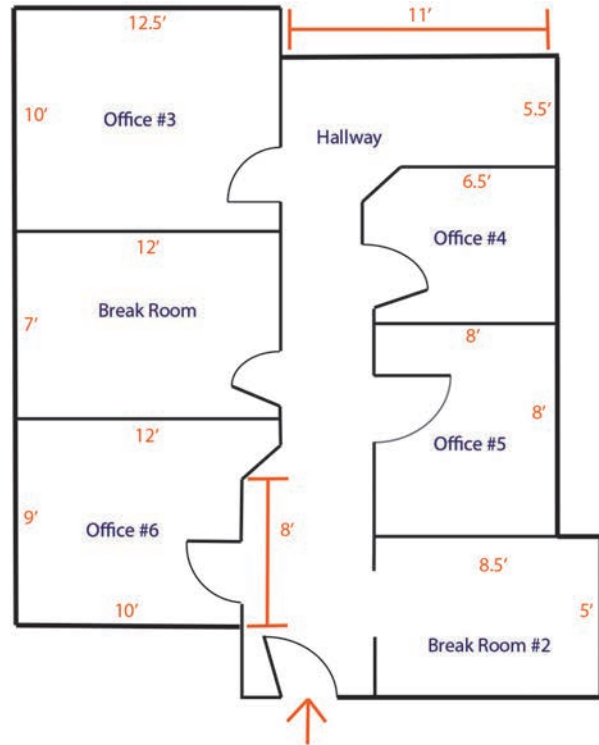
SAM@4ACRE.COM  
904.505.5282

CALL  
FOR MORE  
INFORMATION

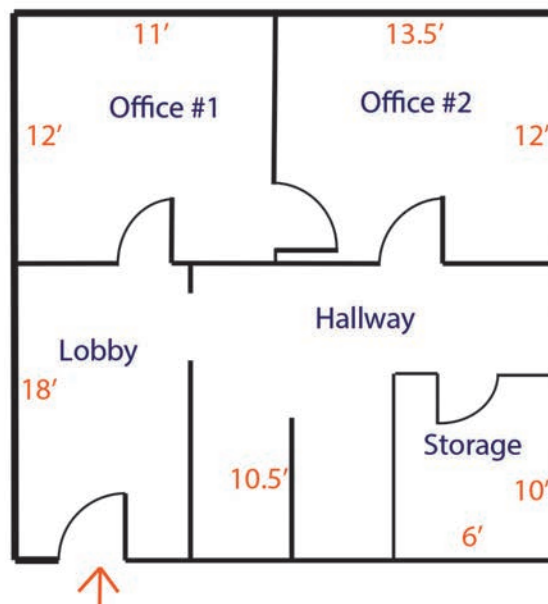
Suite 305 - ±815 SF



Suite 355 - ±868 SF



Suite 385 - ±869 SF



(All Measurements are Approximate)

PRESENTED BY

Jordan Cacho  
JORDAN@4ACRE.COM  
407.721.0602

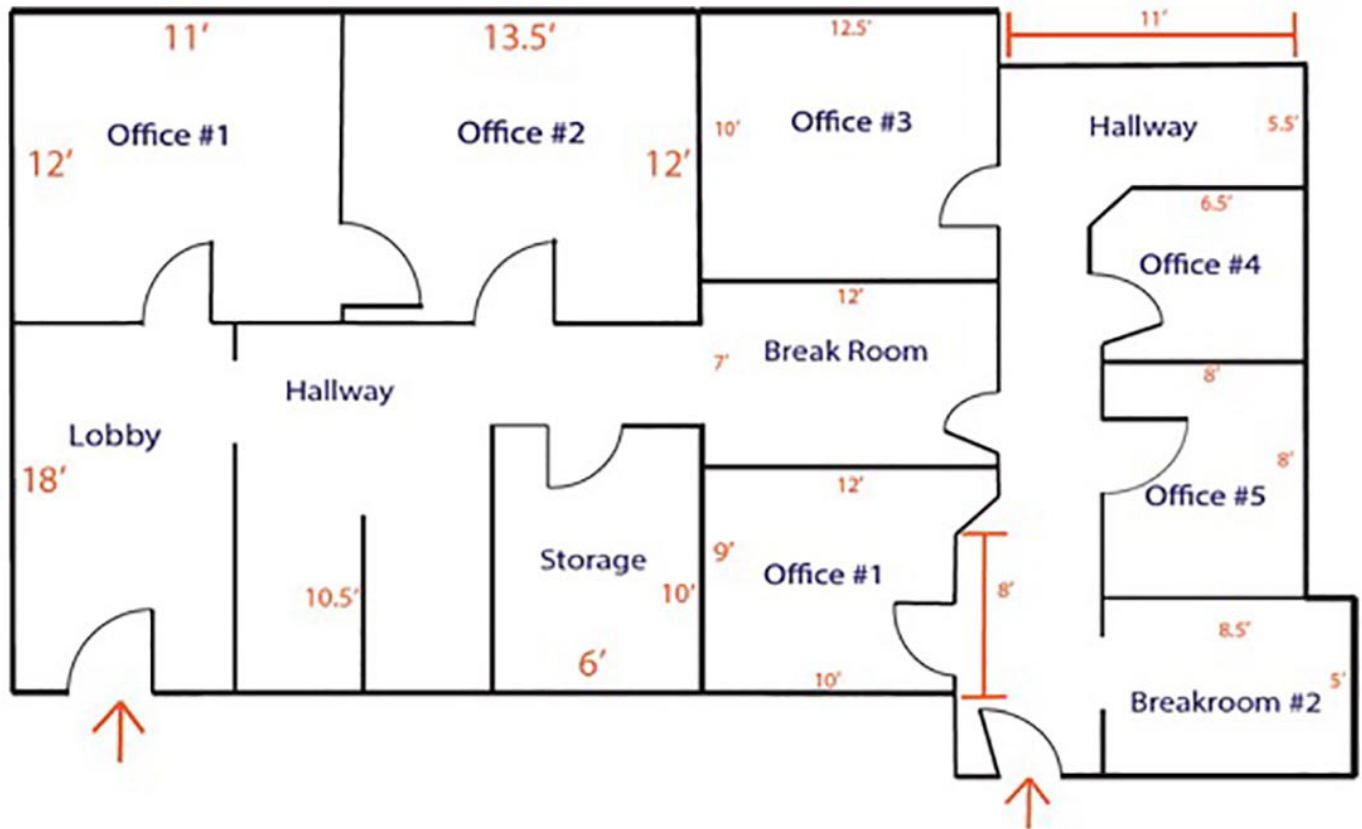
Colin Chou  
COLIN@4ACRE.COM  
850.218.1902

Samuel Gaslin  
SAM@4ACRE.COM  
904.505.5282

CALL FOR MORE INFORMATION

## Suite 355 - ±1,737 SF

(All Measurements are Approximate)



PRESENTED BY

Jordan Cacho

JORDAN@4ACRE.COM  
407.721.0602

Colin Chou

COLIN@4ACRE.COM  
850.218.1902

Samuel Gaslin

SAM@4ACRE.COM  
904.505.5282

CALL  
FOR MORE  
INFORMATION

Points of  
Interest  
Aerial Map



PRESENTED BY

Jordan Cacho

JORDAN@4ACRE.COM

407.721.0602

Colin Chou

COLIN@4ACRE.COM

850.218.1902

Samuel Gaslin

SAM@4ACRE.COM

904.505.5282

CALL  
FOR MORE  
INFORMATION